

The attached letter and supporting documents were received by the Symmes Advisory Committee from the Town of Arlington Cemetery Commission on June 21, 2002 regarding the possibility of a columbarium at the Symmes site.

June 21.2002

Dear Brian,

Here is the best I could do in terms of drawing out what The Cemetary Commission envisions as a columbarium site on the Symmes property. One drawing is a little more elaborate than the other, though you will see why I never went to art school! Also, I have included some material regarding columbariums and what different types may look like. The nice thing about them is that they are a flexible enough design so as to fit into any type of space you want. According to Bill Carroll, the director at Mt. Pleasant Cemetary, the round structures take up less space. We prefer these anyhow, as we think that their shape is more pleasing and easier to work with in terms of placement and for allowance of a low maintenance landscaping environment that also fits into Symmes environment. The commission had their last meeting until September last week, however we are all in agreement that we can be brought together at a moments notice to work on this. The three of us will be around all summer, and we need to be available for signing deeds as well. We agreed that I would try to put something together for you to look at and help with visualization so you know where we are coming from. Again, we are very excited about presenting our ideas and talking to whomever else we need to. As you read through this material, we ask that you please keep in mind that although cemeteries are places for reflection and remembering those who have passed on, they are also places for remembering and celebrating the life that is around us, as is evident by the layout of the area, the landscape, the habitat, and the others that we may meet while there. As humans, we need these areas, and they are important to our history and to the lives we are committed to living out.

Lastly, you had asked that I also provide you with the reasons why we as a commission feel that the columbarium would be an asset to the Symmes property and to the town.. Here is what we all agree upon,(though they are in no special order),

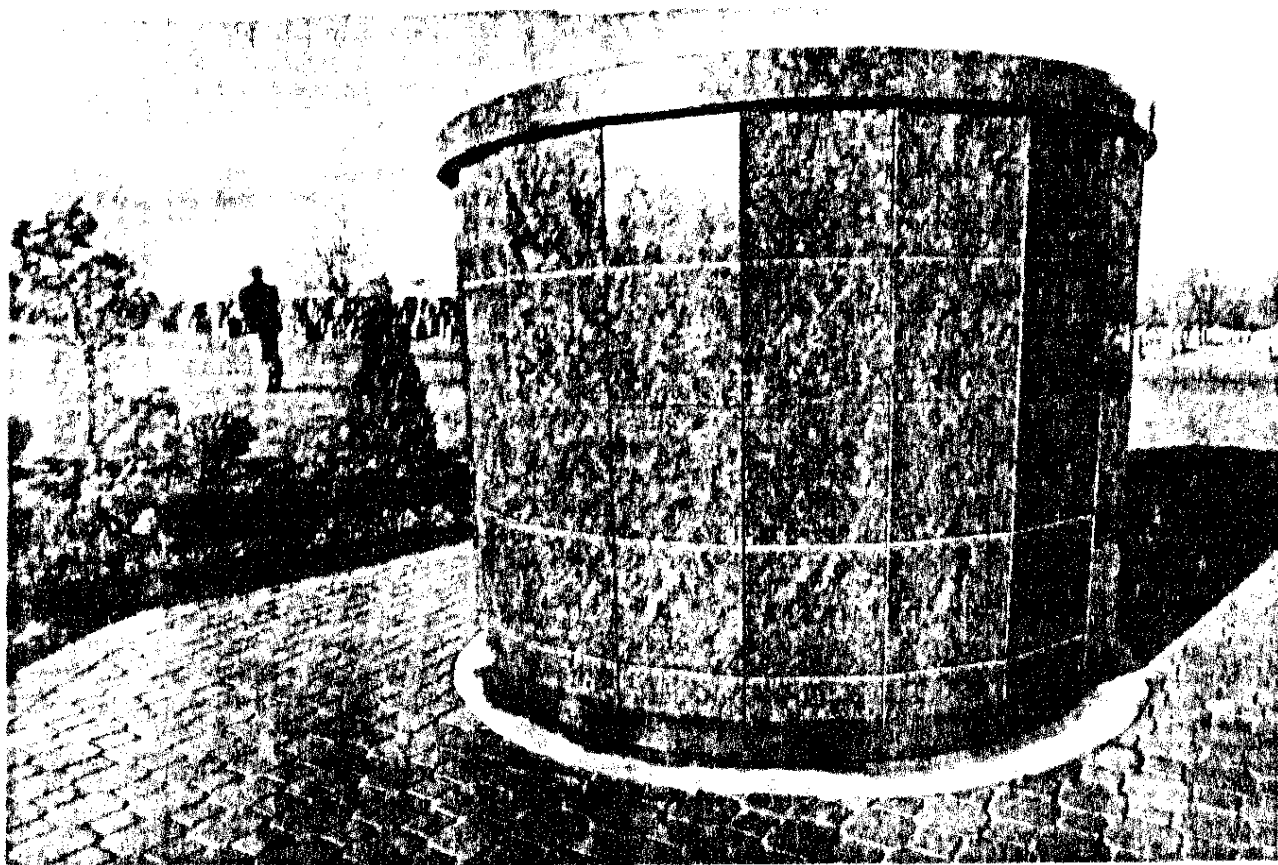
1. There will be low maintenance. A columbarium area does not require the extensive care of a cemetery. Picking up any decorations or lawn maintenance can all be done in one afternoon or less according to Bill Carroll.
2. Due to the first fact, more crew will not have to be hired and Bill will still have control over the same crew and machines.
3. The possibility of involving the garden club, or some steward of the space, would help to cut down on any costs and be free. This would be helpful in maintaining any gardens or doing any plantings.
4. Using the back road onto the property would keep the area private for families as well as neighbors, new dwellers in the area and would not go by the medical facilities or housing in the front of the property.
5. There are no burials, caskets, or heavy equipment to store at the property. A door only needs to be opened to place cremains in and then resealed. It is quick, and quiet.
6. Disinternments, the removal of cremains for whatever the reason, can be conducted quietly at any time of year without disturbing the neighborhood. This is not the case when disintering a ground burial involving a casket.
7. There would be no unsightly or unsafe décor allowed. Only vases on the front of the plaques would be available.

8. There is a much decreased vandalism threat with a columbarium in that area. Stones can't be turned over, neighbors would be able to hear any mischief and there will be security at the Symmes building too.
9. If each slot in the columbarium can house the cremains of 2 people, that would increase space saved and used. Also the spots could be sold pre-need, as the town cemetery is unable to do at present. That is money coming into the town, on top of fees that need to be paid at time of use. There is no money going out!!
10. Features of the area could include stone benches, stone paths and a wrought iron fence at the opening, all very low maintenance items.
11. As a columbarium area, concerns for toxic waste clean-up could be decreased probably, no need to dig /blast ledge for the burials, and this would decrease any instability in the surrounding area for the placement of the cremains.
12. The space would minimally disrupt the area as it is being built, however once done, it would be very inviting to the wild habitat around it to re-establish itself, and the neighbors would have plenty of privacy.
13. There have actually been requests for a structure such as this for the town from residents, and Arlington has actually lost business due to the inavailability of these services.
14. Though a cemetery is ideal, other options need to be explored as this is not feasible. There is also a giant increase in cremations as space for burials is less available and we believe that the new structure will invite people to choose this option and Arlington for it's needs.
15. The Archdiocese is easing up on cremations for reasons previously mentioned, and this is the largest religious population in Arlington.
16. These services are not being duplicated in Arlington for it's residents who wish a nondenominational area to be buried/remembered in.

Though death is not a pleasant subject to think about, it is something we all face and leave our families to deal with. It is one of those inevitabilities as we live our lives. But if no one really cares about places like this and the history and atmosphere they provide, than why at the time that services are needed are people fighting to get into Mt. Pleasant Cemetery? Families call their representatives, their senators and the town manager making requests for spaces. The homes around cemeteries are never vacant because they are not unpleasant to be near. Symmes also offers the covering of trees as another barrier for those neighborhoods already established around the property.

We hope that with this information there will be a next step for us in these discussions and we readily look forward to hearing from you , or anyone else who would like to talk to us! We hope by September our office will be back to normal. In the mean time, please feel free to call Michele(781-646-2559). If there is anything else that is needed, please do not hesitate to let us know. Thank you!!

Sincerely,
The Arlington Cemetery Commission
Edward Murphy
Bernard Smith
Michele Hassler



At St. Mary's Cemetery in Salem, a new columbarium can hold up to 90 urns containing cremated remains.

The final choice

Archdiocese offers low-cost option to cremation

By Tara H. Arden-Smith
GLOBE CORRESPONDENT

Troubled by a small but gradually rising number of Catholics choosing to have their bodies cremated after they die, the Archdiocese of Boston is preparing to introduce discounted burial packages designed to compete against cremation's lower

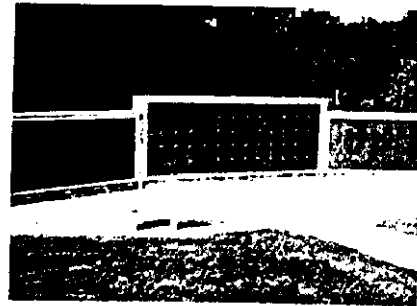
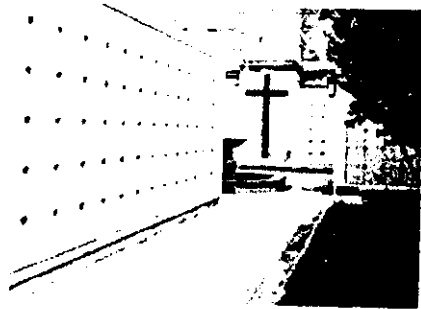
percent discount off the cost of a grave site.

The archdiocese will also film a miniseries to educate the faithful about Christian death and burial in Catholic cemeteries. The program will be aired on Boston Catholic Television next year.

In recent months, church leaders, including Cardinal Bernard F. Law, have voiced concern that Catholics are choosing cremation as a simpler, less expensive option than a full service burial.

COLUMBARIUM PLANNERS

The only company dedicated solely to the design and construction of columbaria for Churches and cemeteries



Our Patent Pending modular core system is the result of five years of research and development and the construction of thousands of niches. The CPI system gives you the flexibility needed to custom integrate the columbarium into new or existing facilities. We will assist you in all phases of the columbarium project including site planning, models, financing, cost and revenue projections, and operation.

ARCHITECTS - If your specialty is church architecture, we want to be your columbarium consultants. With our proprietary niche system, you have virtually unlimited design flexibility.

CALL, FAX OR WRITE FOR COMPLETE INFORMATION

COLUMBARIUM



PLANNERS, INC.

COLUMBARIUM PLANNERS, INC.

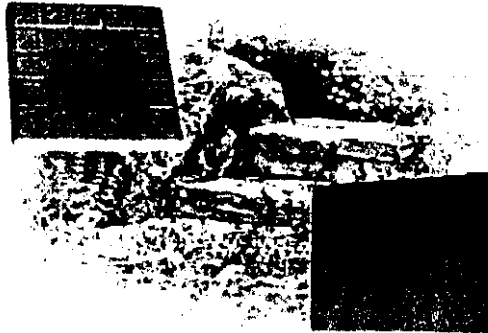
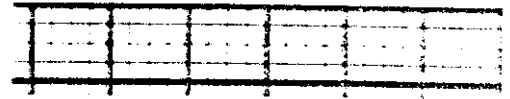
17 Parker Lane, Box 5255, Pinhurst, NC 28374

Phone: 910-295-8328

Fax: 910-295-3420

Email: info@pinhurst.net

ARCHITECTURAL COLUMBARIUM
and Other Memorial Garden Elements



As more people than ever before choose cremation, a new trend is developing for remembrance: **the Memorial Garden**. The concept: an architected burial environment with beautiful structures and landscaping. The result: a stunning memorial to loved ones and an inviting haven for family and friends.

Architarium designs and manufactures your memorial garden elements (columbarium, memorial wall, pavers, etc.) to be both aesthetic and functional. We specialize in natural materials (**metal, stone and glass**) and in innovative designs (**indoor/outdoor, affordable, modular, shippable**).

Architarium will work with you and/or your architect to create the columbarium and memorial garden that you envision.

- | - The Columbarium - | | - Faceplates - |
- | - Vaults - | | - Urns - |
- | - Pavers/Bricks - | | - Cast Plaques/Letters - |
- | - Consulting - |

To discuss your project or request a catalog, please call us toll-free at **1-888-310-2038** or e-mail us at sales@architarium.com

ARCHITARIUM
A CAPITOL ENGRAVING COMPANY



Helping Loved Ones Come Back Home to Your Church

Churches have put their trust in Homecoming's Products and Services to help create an atmosphere of meditation and enhanced ministry. We have invented the gold standard for columbaria construction with our Garden Niche™. Our niche is patented with 22 approved claims acknowledging our product as unique.



A place to congregate and remember loved ones must be as durable as their memory. Homecoming follows that simple credo with only the finest in columbaria and cremation-based products for your church garden.

SITE MAP

[Home Page](#) • [Illuminated Image Niche Columbarium](#) • [Closed Corian Fronted Columbarium](#) • [Open Glass Fronted Columbarium](#) • [Honorable Family Columbarium](#) • [Company Message](#) • [Innovative Developments](#) • [Columbarium Refurbishment](#) • [Cultural Customs](#) • [Comparing Niche Wall Attributes](#) • [Identifying Risk](#) • [Accessories](#) • [Technical Support](#) • [Death Care News](#) • [Links to Other Related Contact](#)

Email: glam@columbarium.net

CLOSED CORIAN[®] FRONTED COLUMBARIUM *for URN GARDENS or a MAUSOLEUM*

Testing the boundaries of memorial design Modular Niche Wall Systems have developed a new generation of columbarium so revolutionary you would think we have been into the future and back.

COMPEL YOUR CLIENTS TO INITIATE INTEREST

Collectively this revolutionary and innovative range of columbaria represents the most comprehensive columbaria options on the planet. Highlighting improved standards and techniques that present the ultimate in State of the Art process to provide personalised memorialisation services to none.

Beyond the confinements of previously available materials the introduction of 21st century materials used in our systems make possible advanced capabilities. This arms the cemetery with an arsenal of unique products to compel your clients to initiate interest and ensure a mutually beneficial purchase.

As the technology and information revolutions continue to transform our lives, the world is moving towards a planetary society. The forces of globalisation are creating greater interdependence between individuals, enterprises, communities and nations. **Greater opportunities exist for companies that access these innovative developments to give you an edge on your competitors. Capitalise on the good design advantages to ensure you can offer greater personalisation to your clients and more user-friendly functions that save you time and money. We are constantly looking for the formula for consumer acceptance, a significant contribution to your increased sales.**

COLUMBARIA THAT ACCOMMODATE THE WHOLE VOLUME

One of the most controversial subjects in the death care industry today are the practical considerations of a columbarium not having the correct capacity. Eliminate the chance of controversy or litigation and ensure your niche wall has the correct capacity. **The last thing your cemetery needs is for someone to sue for physiological and emotional distress after finding the whole volume of their loved one's cremated remains were not memorialized.** See [Identifying Risk](#). There is no point designing something beautiful if it isn't also functional. Our system can give you peace of mind, as your facility is not placed in a compromising position where ethical standards may come under public scrutiny. Changing consumer attitudes mean options for a better class of columbarium will better cater for consumer preference and, in turn, elevate the columbarium as the most prestigious means to memorialize our loved ones.

ECONOMY OF NICHE SPACE

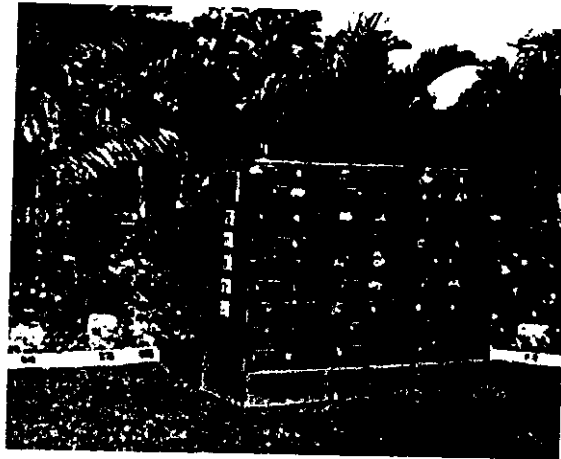
Niches have the capacity to receive the larger 4.5 litre or 1 gallon utility urns, and yet even a small wall of 144 niches can hold twice as many niches as a brick wall of a similar area, and a third more than solid granite walls.

VERSATILITY

Each module accommodates twelve niches in any configuration; single, companions and family positions and plaques be arranged anywhere on the memorial fronts allowing unprecedented flexibility in allowing multiple interments.

SECURITY

A sealing panel offers security by closing off each niche once occupied. Further security is ensured with memorial being fixed in place with tamper-resistant screws. A special tool is supplied ensuring only you have access.



**External or Internal Modular Columbarium
Wall depicted contains 216 niches (Patent Pending)**

Corian ® is Impervious - a memorial material that will not allow visually detracting unsightly mosses, moulds and fungal growths to take root.

BE RID OF FUNGUS AND MOULD FOREVER

Would you like to be rid of unsightly moulds, moss, fungus and lichen growths on your memorial columbaria forever? Stonemasons took centuries to wake up that the more porous the material the lesser the life expectancy of the memorial. They started using soft stone such as sandstone, limestone and marble because it was easy to work. Later they progressed to harder materials like granite when machinery made workability easier. **The important thing to realise is that ALL STONE is porous - if you want a memorial to last the test of time in today's environment then it is imperative the memorial material be as impervious (non-porous) as possible.** Memorialists' recalcitrant to change in accepting new ideas and materials have hampered and constrained development in memorialisation. The world's cemeteries have not begun to realise future problems of pollution and its long-term effect on cemetery memorials. Most cemeteries are located close to busy arterial motorways. Carbon, sulphur and road grime is constantly stirred into the air and these airborne pollutants settle on memorials and ingrain the material. Acid rain from factory emissions are another major cause of stone degradation in today's city environment. Twenty-four hours a day, every day, deterioration continues to erode the structural integrity and appearance



216 niche Columbarium Many ethnic communities will appreciate your interest in identifying their unique socially enriched requirements and to protect against cultural imperialism. Start modern, yet consciously evoking symbolic and cultural association. our columbaria combine respect for tradition with an awareness of needs for the future. see: [Cultural Customization](#)

ELEGANT LOOKS

The most versatile and revolutionary columbarium system is now available. It can be erected internally in mausoleum as a free standing external wall in a cremation garden. Design, styling options and colour alternatives are achieved with the performance qualities and hard wearing resilience of Corian®. A prestigious appearance that blends well with any environment.

Our columbarium system is much lighter than the weight of some other systems. No cranes required to install or remove.

NO DAMAGE TO LAWNS

Not restricted by the size parameters of solid granite, its unique modular design allows total freedom in wall height and length without the need for crane installation. **No deep furrows to patch up and top dress after a mobile crane heavy crane truck has ripped through your manicured lawns. No huge slewing cranes blocking access roads to your facility for hours at a time while an installation is in progress.** Each modular columbarium comprises of segments that can be carried into tight established areas such as courtyards and garden alcoves with a minimum of disruption to your facilities operations. See - [Comparing Niche Wall Attributes](#).



96 Niche Columbarium - durable, functional and unobtrusive

SUBSTANTIAL BUILDING ECONOMIES

Columbarium dead loads on floors are drastically reduced with a Modular Niche Wall Systems' columbarium. By comparison, traditional cast in situ columbaria are typically 6 times heavier. Our light system also reduces point loads on a structure, to offer greater flexibility and freedom in spatial organ. The combined benefit results in structural building economies. These are distinct advantages when yo planning a multi levelled mausoleum or a 9 story pagoda with 20,000 niches. The factory controlled pre-assembled columbarium is quick to install. Manageable modular segments are easily placed, beir either carried or trolleyed into position, fast tracking installation time to ensure minimal disruption to cei operations and further economies.

THE PRESCRIPTION FOR ECONOMIC GROWTH & PROFITABILITY

The adherence to mind-sets of how cemeterians believe their cemeteries and crematories should traditionally look like could be hampering their financial return on their investment to what is achievable juggernaut of globalisation and technological change will produce a different environment for our cem of the future. See: Cultural Customization

The prescription for economic growth & profitability is to keep in tune with product developme to watch and listen to what people really want themselves for memorialisation. Give the people choice of options and one is bound to appeal to their hearts. However, by not offering a diversity c options or not fully explaining their choices for memorialisation- by saying to people, "Well this is the or size, material and colour you can have" will definitely affect how well your facility prospers.

It seems there is a natural desire to cross the threshold into the twenty-first century with everything in it place, everything organised, as we would want it to be. Yet for most people, the arrival of the twenty-fir century is viewed with anxiety. In developed and developing countries the majority of people are focus survival rather than on an eager anticipation of new opportunities. To thrive in the new century, to prosp develop, should be the accepted challenge. Instead the anxiety levels are causing a resistance to the changes, which are necessary to promote prosperity. The challenge for individuals is to develop strate not for surviving but for thriving in this new globalising society.

...is not affected by harsh climatic conditions and will not degrade under normal

LAND IS A PREMIUM

Innovation doesn't cost the earth! It has a double meaning with our columbaria. Sustainable development is one of major issues that will impact the new millennium. An earth-conscious and environmentally sensitive system that o the least area of land, one of our typical 288 niche columbarium requires no more land area than a single grave. An indispensable part of your future development, even if you may think you have loads of land at the moment, an eff land management policy will require forward planning if you are going to maximise best use of available land. Ou conserving alternatives ensure you utilise best use of land and extend the life of your cemetery, crematoria or chur cremation gardens.



72 Niche Pillar Columbarium Regardless that you may have a columbarium that is only one quarter filled, by providing your client with a larger variety of columbarium systems of diversifying size, shape, style, function and finish, you are providing choices that your customer will find appealing. The benefit to you is that you motivate the all important customer satisfaction and desire to purchase.

A good combination of niche walls and memorial gardens will ensure your will remain sustainable for the future. The Modular Niche Wall is the light most compact external columbarium in the world. Being unobtrusive, it sits well amongst landscaping, eliminating the boring and monotonous corridor like walls. A more intimate and personal atmosphere can be created with our niche walls. A more intimate and personal atmosphere can be created with our niche walls placed in a garden nook setting. See - [Comparing Niche Wall Attributes](#).

Freeze and Thaw. Acrylic Solid Surface Material such as Corian® and Staron® are impervious, homogenous and free of hidden flaws, which means no bubbling, flaking) in freezing conditions.

The ultimate in longevity, our columbaria are not in anyway affected by freeze and thaw cycles resulting from moisture and damp. Acrylic Solid Surface is impervious (non-porous) and will not absorb even boiling oil; it does not allow moisture to gain entry. The first signs of dampness on other monument material are quite often surface deterioration followed by subsequent damage to the structural integrity of porous stone. Stone's performance cannot be improved. Sealer coatings are only a temporary measure and they often look shabby when they weather and break down.

Brick, Granite and other Stone can absorb moisture which then freezes to create internal pressure that causes spalling (flaking) of the stone surface finish, followed by crumbling and eventual failure. Crystallisation damage is usually caused by frost, and occurs progressively over a number of years resulting in strength failure along with visible surface damage.

Acrylic Solid Surface is the superb solution to the problem of the weathering degradation of cemetery monuments. **It is not the density but how impervious a material is that will ultimately determine of a memorial. It goes without saying - the maximum resistance to moisture penetration and protection must be the first priority of a memorial. Nothing repels water and airborne pollutants better than Corian® and Staron®.**

Saturated stone can deteriorate if weather conditions turn cold enough to freeze the absorbed water. The resulting expansion can progressively crack and spall the surface of the stone. One of the worst forms of weathering finishes is grit blasted (sandblasted) or bush hammered stone, as it simply opens up the pores of an already porous material to allow freezing water problems to occur more readily.

Disintegrating bricks and flaking stone are also symptoms of rising damp. Moisture will travel via the path of least resistance, capillary attraction draws water inwards and upwards, sponge-like through the pores. When moisture reaches the surface, salts carried from the ground form crystals, fretting away the skin of brick and stone. Uncontrolled damp will eventually destroy most constructions. Twenty four hours a day, deterioration continues to erode the structural integrity of the material.

Acrylic Solid Surface has NO Flaws and Cracks: unlike quarried stone materials, and it is not susceptible to hidden flaws that can cause cracks and disintegration due to climatic conditions.

In the monument industry moisture penetration is the biggest cause of memorial deterioration.

Acrylic Solid Surface is a synthetic, non-porous, non-porous material that is impervious to moisture, and is not susceptible to weathering, staining, or discoloration.



Release

TOTEMS

The introduction of the **Totems** is great news for those families wanting more personalization. People now have more identity for their families in cremation memorialization. There are three individual compartments for private family purchase in each **Totem**.

People have a choice of holding one or more niche compartments that have a capacity for one to four. Niche compartments are primarily used for couples, their two photoceramics positioned above a companion plaque. Accessories are available such as flower vases; they are a great way to soften any memorial into the landscape.

A grouping of **Totems** meld into the surrounding landscaping effectively blurring the transition of man-made forms into the environment, a uniquely striking addition to any Memorial Gardens. **Totems** give you more upmarket choice of personalization and individualism for inurnment than has previously been available.

(picture of Front) **An example of plaque arrangement, this one has two portrait photo ceramics positioned above a companion plaque and bud holder. There are many and varied appearances possible with 'Fronts' being either directly engraved or alternatively mounting plaques of various materials and styling. Plaques take less than 3 minutes to apply to our impervious Solid Surface Fronts, no messy silicones, no temporary propping, no drilling required**

Totem Dimensions:	Length x	Depth	x	Height
Metric	376 mm	376 mm		1535 mm
Imperial	14 ⁹ / ₁₆ "	14 ⁹ / ₁₆ "		5' ⁷ / ₁₆ "

Urn Capacity: 1 to 4 urns per niche compartment

Weight: 50.3 kg / 111 lb

CREMATION GARDENS – are the way of the Future.

It is imperative that a cremation garden is properly planned. A good Landscape Architect will extract the maximum available land features and introduce the all so necessary flair that all great gardens have in common. They can provide a valuable service from schematic designs through to working drawings developed designs, contract documents, supervision and coordination of works.

As a designer I can offer this advice. *A good design is immediately evident, though to achieve it, the end

must be visualised completely then systematically work your way back to the start.' My philosophy applies to many industries. An artist does not put pen to paper without a clear picture in his mind of the finished work, he has the image already on the paper – then simply traces around it. That is why professionals make it look so easy and a novice starts without a plan and then falters. The same applies to cremation gardens and memorial parks. Design without a well-designed plan will only result in a very ordinary haphazard waste of funds. **Gardens are a long investment; unfortunately if they are not planned properly we have to look at them a long time.**

There are many professional Landscape Architects out there that would relish the opportunity to create a wonderful peaceful place of comfort and reflection. Meticulously landscaped gardens are therapeutic. Splashes of color, variegated leaves, a lush green garden nook creating private spaces. The sounds of running water by a brook, the whistling of birds feeding on the nectar blossoms. Magnificent shade trees masterfully scaled down to a wonder of understory planting interspersed with floral rock gardens. Butterflies and dragonflies hovering over rock pool gardens can be an absolute joy to visit if planned properly; they are in many cases the best gardens in the world. Surprisingly today people are even getting married in these beautiful gardens that often they have to book in advance.

Over recent decades there has been unfortunately an increase in impersonal memorialisation. Long corridor like columbaria surrounded by mass concrete can make the monuments impersonal, hot and uninviting. Our columbaria is the most compact and versatile in the world. There is no need for cranes so there is absolutely no damage to you or the surrounding gardens. Our system is modular; the segmented construction is quick and efficient to place in the most inaccessible of sites. All columbaria are finished in colours inspired by the moods and textures of nature. A permanent pleasant and private space. Positioned alongside a cool stream under the semi shade of trees surrounded by manicured lawns is a refreshing and healing experience. Such design lowers stormwater runoff, increases percolation and groundwater recharge & lowers reflected heat.

Our columbaria soften the transition between manmade and natural forms, effectively blurring the boundary between structure and environment. When cremation gardens appeal to your clientele your patronage increases and with it and so does your business. Those that realise our more pleasant alternatives will grow and prosper.

MODULAR DESIGN

Traditional notions of order and conformity coupled with modern demands for efficiency make modular design a natural tool. Modular design is the practice of deliberately creating objects or series of units to meet a predetermined standard sized set of proportions or dimensions. This is particularly relevant when it comes to columbaria because you know the minimum size urn should be 200 cubic inches with the average urn being 1 gallon or 4.5 litres. **See: Identifying Risk**. The reasons for adopting a modular system are primarily for pragmatic reasons – to save waste, labour and to rationalise a production process or to provide a system of variable components that are compatible and interchangeable and flexible. A contemporary example of conformity to an international modular standard is the standard sizes of paper and printed materials in multiples known as A4, A3 and so on. In Europe and the US it was in the 20th century that the use of the module became widespread in everyday life, and this was partly due to the impact of mass production and partly because of the influence of the functionalist, reductionist approach of the modernist movement designers.

In pre-industrialised Japan, standardised formulae developed to govern the dimensions of man-made articles were accepted, just as many aspects of social status, language and dress were minutely codified. In a society where conformity to rules and an innate sense of order were so necessary, it is not surprising that designers also sought designs that were harmonious and ergonomic.

Modular Niche Wall Systems understand good design. See: [Innovative Developments](#). Anybody can over design, however, we push the envelope of minimalism. Cutting edge design that extracts the limits from modern high strength weight ratio materials. To quote famous Bauhaus Architect-Mies van der Rohe's maxim: "less is more."

CORIAN®

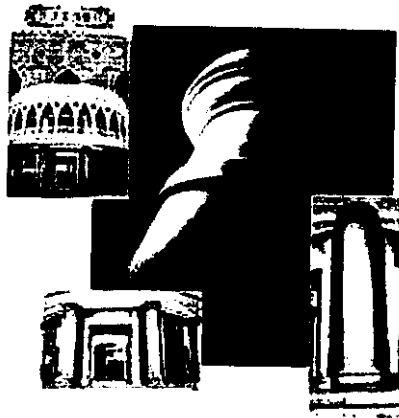
Modular Niche Wall Systems prides itself in being the world leader in the design and supply of the most innovative and comprehensive range of Columbaria available. When we were developing our system, the whole range of materials that were tested and evaluated. The following physical properties and performance of Corian™ are an overview highlighting 10 good reasons we chose Corian™. Why don't you be the judge as to what is a more suitable material for columbaria?

qualities as it will not allow bacteria to enter the pores of the material unlike natural stone material, which is porous. DuPont have been testing Corian® for external use for a lengthy period, and only after exhaustive evaluation of its performance are they happy to recommend its use for exterior situations even in a corrosive coastal environment. In most cases the more durable of materials are synthetic and man made. For example glass, titanium, all plastics, PVC, aluminium, stainless steel, the tiles on the space shuttle are all manufactured. We would not lead the comfortable lives we do today if it were not for synthetic materials, and Corian® is an indispensable part of that equation.

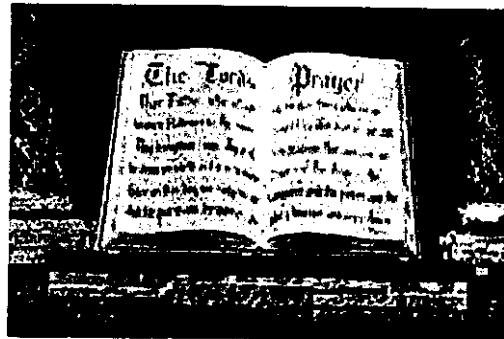
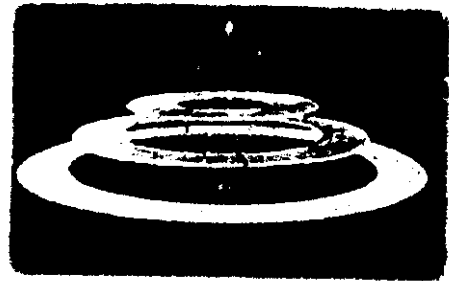
When you invest in a new business product, always look at the benefits a new product might have, for instance appearance, cost or efficiency. They are looking for a competitive edge to survive in our market. Having the right product does not occur accident, it comes from good research and development. After extensive evaluation of the use of Corian® we could only form one conclusion. Modular Acche Wall Systems Australia became the first Corian® manufacturer in the world to use Corian® in outdoor applications. See [innovative developments](#)

Examples of Exterior Use . . .

Teda International Club, Tianjin, China. The designers wanted to use columns on the exterior of the building to set a regal tone. The designers chose Corian® for its flexibility and durability. Corian® has the ability to be thermo formed into curves.

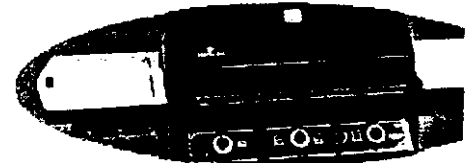


Exterior Fountain. More and more designers and architects are discovering Corian® as a medium creative expression. This fountain has been installed since the mid 80's.



Chicago Cemetery. For around 15 years, this exquisitely moulded and routed Corian® bible has been installed as the fence of a cemetery in Chicago.

Outdoor Barbeque. The naturally hygienic Corian® surfaces flanking this gas grille can take a beating from the sun, the rain and the chef that worries more about his ribs than where he's flinging the barbeque sauce.





Trees

willow tree

More Columbian Version

Bench

willow

#2

path on slope of hill

path

Garden Fountain

#3

Gate to Entrance

#1

path

yellow

willow trees

More Columbian Version

willow

yellow tree

peeled down version

Willows

Gardens

Trees

Berles

Berles

Path

Gate to entrance

Willows

Gardens

#3

Garden or fountain

#2

#1

Berles

