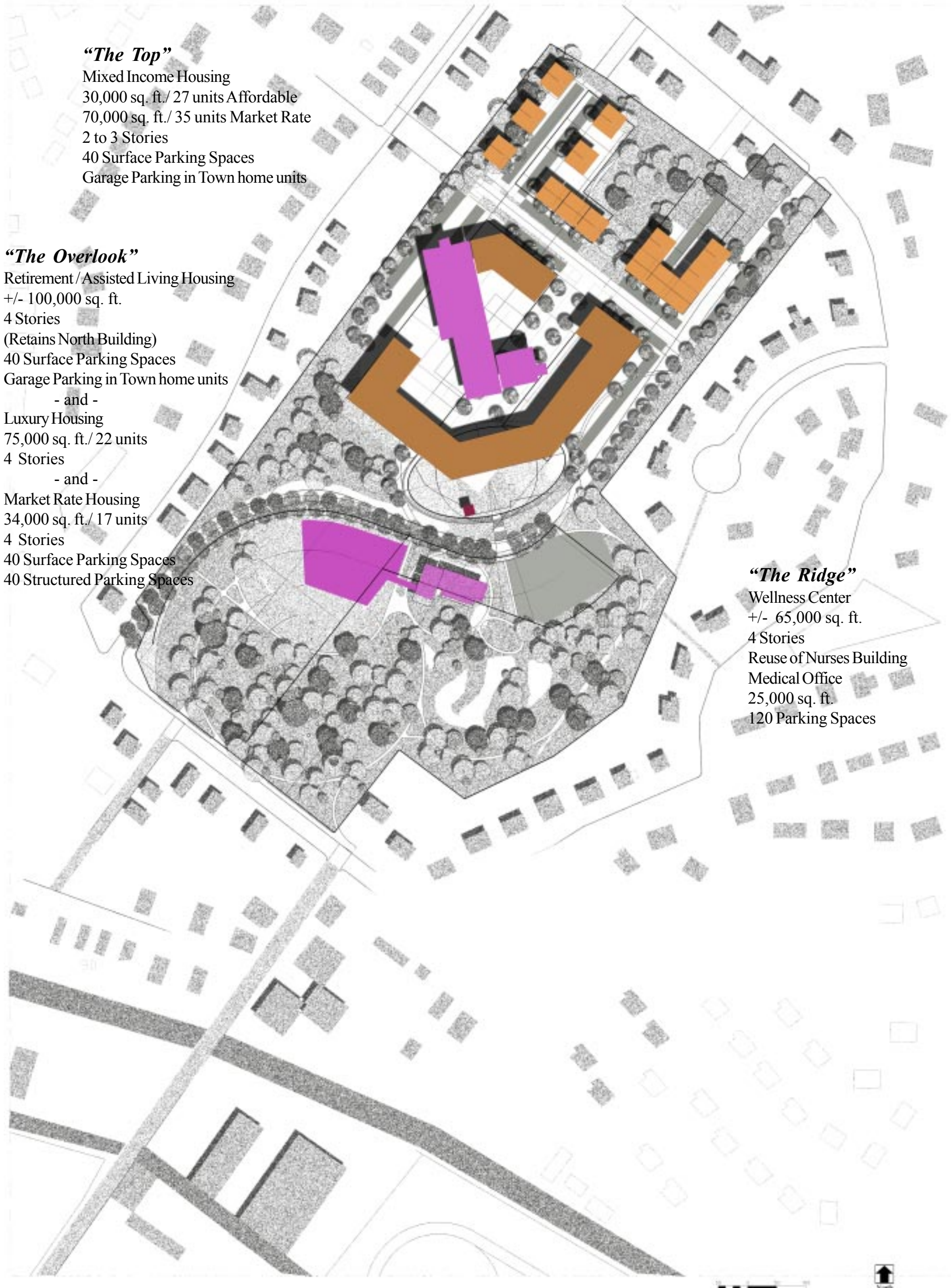


# Symmeh Hospital

*Autumn*



**“The Top”**  
Mixed Income Housing  
30,000 sq. ft./ 27 units Affordable  
70,000 sq. ft./ 35 units Market Rate  
2 to 3 Stories  
40 Surface Parking Spaces  
Garage Parking in Town home units

**“The Overlook”**  
Retirement / Assisted Living Housing  
+/- 100,000 sq. ft.  
4 Stories  
(Retains North Building)  
40 Surface Parking Spaces  
Garage Parking in Town home units  
- and -  
Luxury Housing  
75,000 sq. ft./ 22 units  
4 Stories  
- and -  
Market Rate Housing  
34,000 sq. ft./ 17 units  
4 Stories  
40 Surface Parking Spaces  
40 Structured Parking Spaces

**“The Ridge”**  
Wellness Center  
+/- 65,000 sq. ft.  
4 Stories  
Reuse of Nurses Building  
Medical Office  
25,000 sq. ft.  
120 Parking Spaces

**Alternative 4**

Draft 12/12/02

